

# Installation Instructions

ANTI-VIBRATION PRODUCTS | EXPANSION COMPENSATORS | FLEXIBLE CONNECTORS | ACOUSTIC PRODUCTS | THERMAL INSULATION

## ANTI-VIBRATION PRODUCTS

### OS2/IL Restrained Spring Mount

Before installation please carefully review the data below to ensure your equipment and installation environment does not exceed the products limitations.

Operating Temperature Range: -20°C to +80°C

**NOTE - Failure to install the correct mount may result in the potential failure of the anti-vibration mount.**

**NOTE - These mounts should only be used in compression, never in tension or shear.**



AVM Variant	Load Kg / (N)	Colour Code	AVM Variant	Load Kg / (N)	Colour Code
OS2/IL-600-PR	600 / (5886)	Purple	OS2/IL-1900-PK	1900 / (18639)	Pink
OS2/IL-720-RD	720 / (7063)	Red	OS2/IL-2100-GY	2100 / (20601)	Grey
OS2/IL-900-WH	900 / (8829)	White	OS2/IL-2400-LG	2400 / (23544)	Light Green
OS2/IL-1100-GN	1100 / (10791)	Green	OS2/IL-2700-BK	2700 / (26487)	Black
OS2/IL-1300-LB	1300 / (12753)	Light Blue			
OS2/IL-1500-DB	1500 / (14715)	Dark Brown			
OS2/IL-1700-CL	1700 / (16677)	Claret			

#### STEP 1

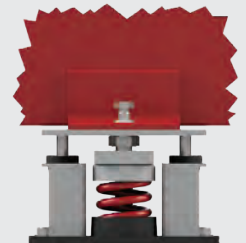
Ensure the correct anti-vibration mounts has been selected for the application and are undamaged.

Place on a level surface and remove the upper fixing screw and washer from each anti-vibration mount before positioning in the desired locations beneath the equipment to be isolated.



#### STEP 4

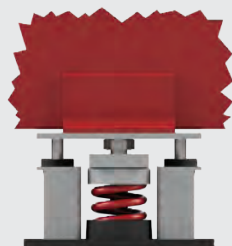
Each anti-vibration mount should now be bolted down to a level floor surface or supporting structure using the two open-ended slots located on the baseplate.



#### STEP 2

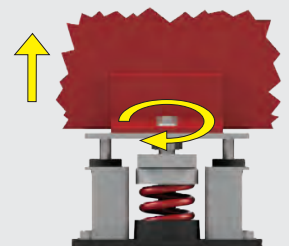
Line up the holes in the base of the equipment with the threaded holes in the anti-vibration mounts.

Proceed to lower the equipment down onto the anti-vibration mounts.



#### STEP 5

The levelling process should start with the mount that has deflected the greatest and continuing in ascending order until the equipment is level. This process is achieved by turning the levelling screw located underneath the top plate, allowing the equipment to be raised to the desired level.



#### STEP 3

It will be noted that each mount will have deflected by a varying amount due to the static loads applied.

Before levelling the equipment, loosely re-insert the upper fixing screw and washer onto each anti-vibration mount.



#### STEP 6

Further adjustment and maintenance should not be required.

However we do recommend that visual inspections take place to check for accidental damage or misuse.

