

Installation Instructions

ANTI-VIBRATION PRODUCTS | EXPANSION COMPENSATORS | FLEXIBLE CONNECTORS | ACOUSTIC PRODUCTS | THERMAL INSULATION

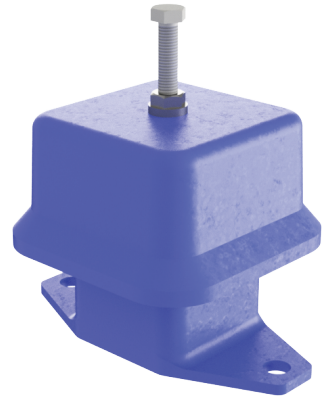
ANTI-VIBRATION PRODUCTS

MS1-HD Enclosed Spring Mount

Before installation please carefully review the data below to ensure your equipment and installation environment does not exceed the products limitations.

NOTE - Failure to install the correct mount may result in the failure of the anti-vibration mount.

NOTE - These mounts should only be used in compression, never in tension or shear.



Mount Variant	Max Load Kg / (N)	Colour Code	Mount Variant	Max Load Kg / (N)	Colour Code
MS1-HD-GN	33 / (323)	Green	MS1-HD-BK	170 / (1667)	Black
MS1-HD-WH	62.5 / (612)	White	MS1-HD-PL	219 / (2147)	Plain
MS1-HD-BU	72.5 / (710)	Blue	MS1-HD-YW	264 / (2588)	Yellow
MS1-HD-RD	127 / (1245)	Red			

STEP 1

Ensure all the anti-vibration mounts are of the correct variant for the application and are undamaged.

Remove the levelling screw, lock nut and washer from the top of the anti-vibration mount.

STEP 5

Once the equipment is level, tighten the lock nut down onto the top plate on each mount to secure the equipment at each location.

Each mount features holes to allow for it to be bolted directly to the floor or supporting structure.

STEP 2

Position the anti-vibration mounts beneath the base of the equipment that is to be isolated. Line up the holes in the base of the equipment with the levelling studs on the anti-vibration mounts.

Proceed to lower the equipment down onto the anti-vibration mounts.

STEP 6

Further adjustment and maintenance should not be required.

However we do recommend that visual inspections take place to check for accidental damage and / or misuse.

STEP 3

It will be noted that each mount will have deflected by a varying amount due to the static loads applied. Other factors such as slight variances in the floor surface can also cause differences in deflection.

STEP 4

With the lock nut wound up to the head of the levelling screw, re-insert the levelling screw into the threaded hole of each mount.

By screwing the levelling screw into the mount, the top housing will rise thus allowing the equipment to be levelled. The levelling process should take place by first starting with the mount that has deflected the greatest and continuing in ascending order until the equipment is level.

